

What's New in Autodesk Facility Manager 7.1

Autodesk is pleased to announce the following new capabilities when you upgrade or purchase Autodesk Facility Manager 7.1.

New Features

- Save as .DWF file – The save feature in Facility Manager has been enhanced to include:
 - Save as Plan View – Save your drawings as “Plan Views” after dynamically hatching plans or adding markups
 - Export as .DWF - Share your facility drawings and data with others who have the free Autodesk Design Review viewer
- Enhanced Dynamic Labeling – Drawings labels can now be rotated and include automatic leaders when moved outside of an assigned space
- Auto-zoom - Automatically zoom to selected spaces and assets on facility plans
- Window selection tool improvements - Selection windows can now be created within a floor plan providing easier selection of spaces
- Support for AutoCAD 2008, AutoCAD Architecture 2008, and Revit 2008 and Microsoft Vista

CONTENTS

New Features 1

Leveraging .DWF, BIM and FMDesktop 2

Increased Power and Versatility 2

Dynamically Report:
Facility Manager provides more than 130 predefined reports. Facility Manager 7.1 includes performance improvements that allow you to run reports faster.

Find it Fast:
Locate, zoom to and select spaces and assets with ease with the new drawing viewer improvements included in version 7.1. Dynamically move, resize and rotate your data labels directly on floor plans.

Fluid Assets:
Drawings, assets, and other vital information unite in a flexible, open architecture. Now with more powerful .DWF import capabilities facility teams can import all of their space and asset data from applications such as Revit 2008 and AutoCAD Architecture 2008.

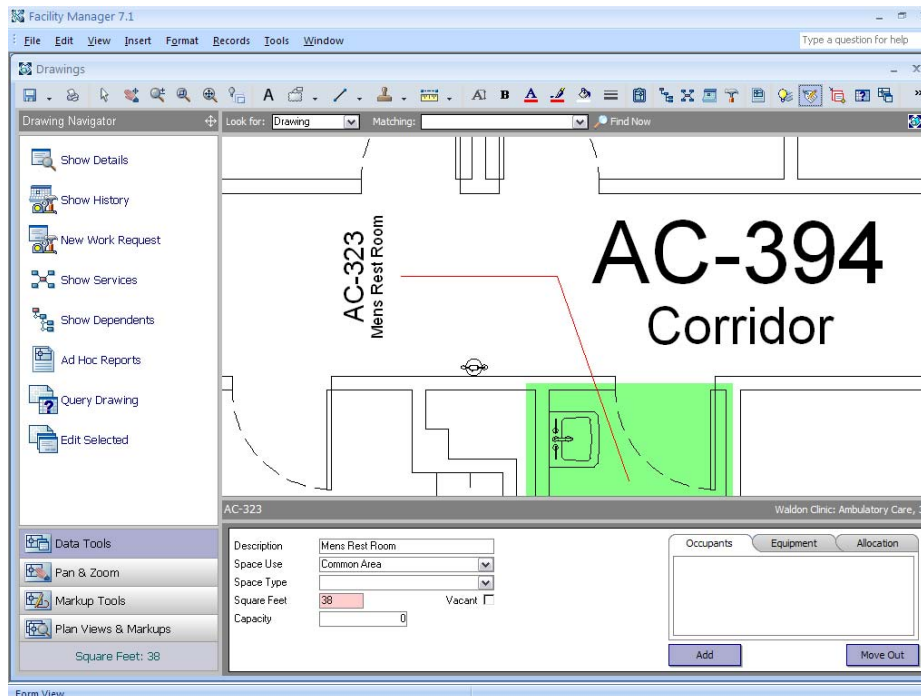


Figure 1 - Facility Manager Enhanced Label Rotation and Leaders

Leveraging .DWF, BIM and FMDesktop

- BIM to FM in 10 (Minutes) – Import your Building Information Models created in Revit. Now you can bring new buildings online in a fraction of the time it takes with traditional CAFM applications
- Importing Assets from Design Applications – Now you can map drawing based asset information to Facility Manager database fields in the .DWF import wizard
- Instant Auditing of Imported data – Upon importing your .DWF based asset information you'll receive instant audit reports of new, existing or orphaned assets

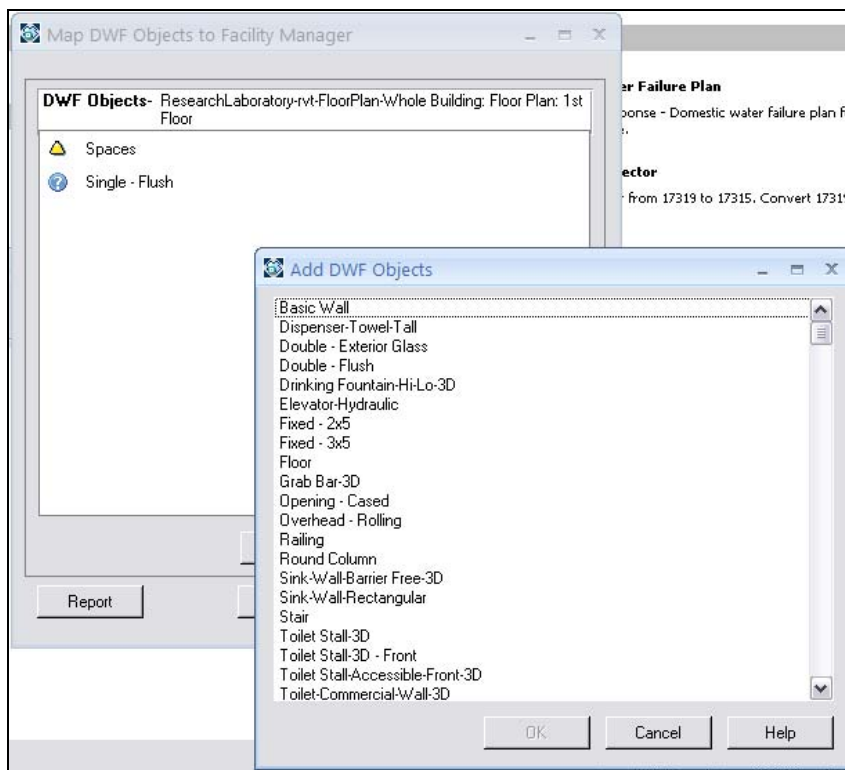


Figure 2 – Importing .DWF Objects From a Revit BIM Model

Increased Power and Versatility

By integrating drawing, asset, and facility management information, Facility Manager brings drawings and data together in a way not possible until now. It addresses key requirements for facilities managers by giving users more information than stand-alone floor plans, databases, or spreadsheets. The open architecture that is the foundation of Facility Manager makes it flexible enough to meet the needs of the many disciplines involved in facility management.

Autodesk and FMDesktop are trademarks or registered trademarks of Autodesk, Inc., in the USA and/or other countries. All other brand names, product names, or trademarks belong to their respective holders.

Autodesk reserves the right to alter product offerings and specifications at any time without notice, and is not responsible for typographical or graphical errors that may appear in this document.

© 2007 Autodesk, Inc. All rights reserved.