

Autodesk Facility Manager CMMS Feature Set

The cornerstone of the FMDesktop CMMS solution, Facility Manager allows facilities teams to track every person, place, and thing. Plan precisely for moves, emergencies, recoveries, and repairs. Know what facility problems need to be addressed and where.

Facility Manager features

- Configurable CMMS Dashboard
- Maintenance managers and Call Center employees can quickly and easily enter and track work requests and track work order status
- Real-time integration of facility drawings, asset and maintenance data
- Preventive Maintenance Scheduling
- Active tracking of past due, current and future work orders
- Desktop based easy to use CMMS application with full facility drawing integration
- Adhoc and pre-defined facility reports that integrate data and facility plans seamlessly

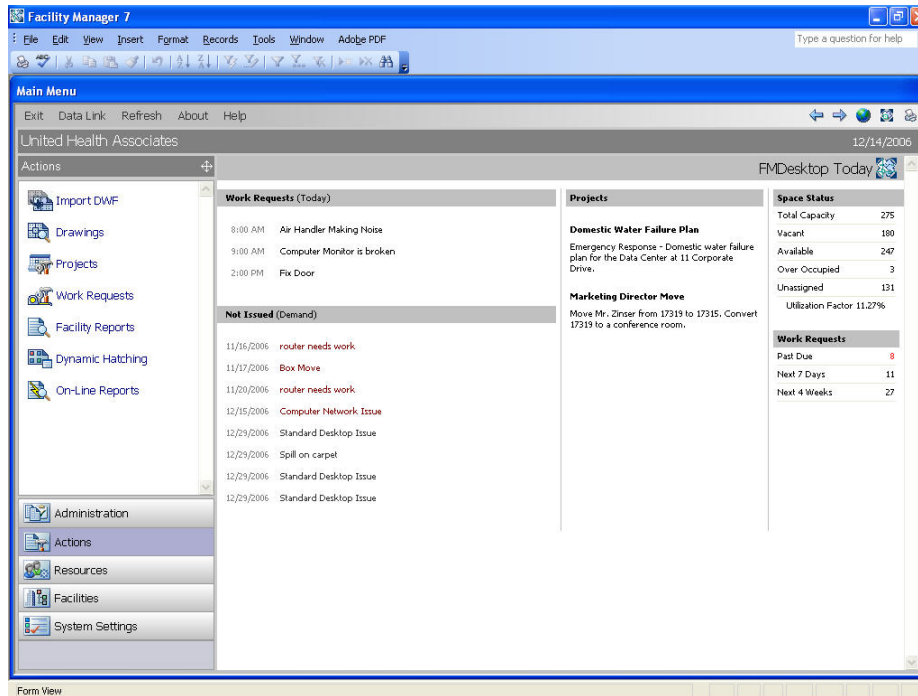


Figure 1 - Facility Manager CMMS Dashboard

CONTENTS

Facility Manager features..... 1

Work Request Specific Features..... 2

Power and Versatility . 2

Dynamically Report:
Continuous productivity depends on up-to-date drawings and data. Facility Manager provides more than 130 predefined reports, with significant ad hoc reporting capability, to enable presentation of precise reports in forms.

Stay Real:
Track and display facility components and the areas they service. Related components are graphically displayed for detailed utility management information and effective emergency response. Select a room to see its breaker panels, water valves, and more. Select a data router to view the computers and network devices it services.

Fluid Assets:
Drawings, assets, and other vital information unite in a flexible, open architecture. Fully configurable, Facility Manager uses the latest Autodesk® technology to provide drawing, viewing, and markup capabilities.

Work Request Specific Features

- Attach drawings and assets directly to your work requests
- Keep track of special conditions such as warranties, safety issues and documents related to work requests
- Track Labor including contractor data, hourly costs and work performed
- Work Requests are tied to Facility Managers parts library to track materials needed or used
- Attach work request specific documents or link to documents contained in the Facility Manager document library
- One click overview summary of the entire work request as well as the ability to quickly generate reports
- Schedule preventive maintenance tasks quickly and easily
- Define your own fields to track items unique to your organization

Establish Emergency Computer Room Cooling, Work Request 2

Work Request | Description | Assets | Labor | Parts | Comments | Summary | Documents | UDFs

Service: Establish Emergency Computer Room Cooling
Property: 11 Corporate Drive
Asset: 117
Location: Data Center, 1.
Requester: Ferguson, Patrick
Phone: (555) 555-5555
Shop:
Supervisor: Burns, Kyle
Project: Domestic Water Failure Plan
Cost Center: 1009: Information Systems
Report: Work Request

Status: Open
Type: Project
Priority: 2
Due: 1/15/2007
Start Time:
Estimated: 1.00 hours
Taken By: (initials)

Warranty Lockout/Tagout
 Documents Safety
 Printed Shutdown

Close

Find Work Request: 2/9/14/2002 8:50:17 AM
Record: 1 of 57

Figure 2 - Facility Manager Work Request Form

Power and Versatility

By integrating drawing, asset, and facility management information, Facility Manager brings drawings and data together in a way not possible until now. It addresses key requirements for facilities managers by giving users more flexibility than stand-alone floor plans, databases, or spreadsheets. The open architecture that is the foundation of Facility Manager makes it flexible enough to meet the needs of the many disciplines involved in facility management.

Autodesk and XXXXX are trademarks or registered trademarks of Autodesk, Inc., in the USA and/or other countries. All other brand names, product names, or trademarks belong to their respective holders.

Autodesk reserves the right to alter product offerings and specifications at any time without notice, and is not responsible for typographical or graphical errors that may appear in this document.

© 2006 Autodesk, Inc. All rights reserved.